

Foussana

design

Giovanni Barbieri





Foussana Sand 45x90 - 17,7"x35,4"



Foussana Gray 45x90 - 60x60 - 30x60
17,7"x35,4" - 23,6"x23,6" - 11,8"x23,6"

GRAY

G30801 BACCHETTA ALLUMINIO
1,5x90 - 0,6"x35,5"

19

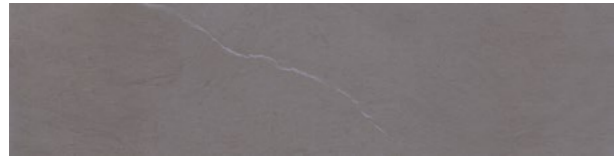


G30803 ANG.
BACCHETTA ALLUMINIO
1,5x1,5 - 0,6"x0,6"

6

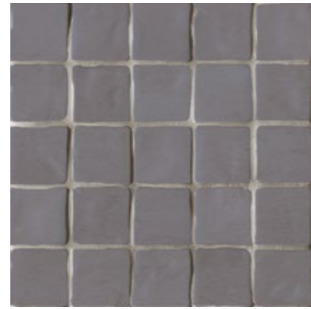
G2053A FOUSSANA GRAY INCISO LAPP. RETT. 45x90 - 17,7"x35,4"

66



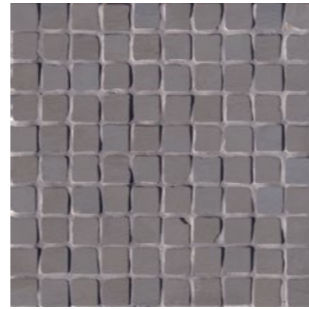
G2047A FOUSSANA GRAY LAPP. RETT. 15x60 - 5,9"x23,6"

66



G30156 FOUSSANA GRAY
MOSAICO 30x30 (tozz. 6x6) 11,8"x11,8"

29



G30157 FOUSSANA GRAY
MOSAICO 30x30 (tozz. 3x3) 11,8"x11,8"

34



G2046A FOUSSANA GRAY LAPP. RETT. 30x60 - 11,8"x23,6"

64



G2044A FOUSSANA GRAY LAPP. RETT. 60x60 - 23,6"x23,6"

65



G30154 FOUSSANA GRAY BATTISCOPA 8x60 - 3,1"x23,6"

16



G2049A FOUSSANA GRAY LAPP. RETT. 45x90 - 17,7"x35,4"

66

SAND

DIGITAL
TECHNOLOGY

GRES PORCELLANATO
IMPASTO COLORATO

G30802 BACCHETTA CROMO
1,5x90 - 0,6"x35,5"

19



G30804 ANG.
BACCHETTA CROMO
1,5x1,5 - 0,6"x0,6"

6

G2054A FOUSSANA SAND INCISO LAPP. RETT. 45x90 - 17,7"x35,4"

66



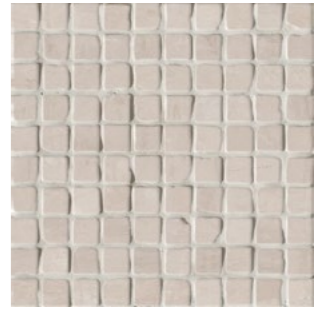
G2048A FOUSSANA SAND LAPP. RETT. 15x60 - 5,9"x23,6"

66



G30158 FOUSSANA SAND
MOSAICO 30x30 (tozz. 6x6) 11,8"x11,8"

29



G30159 FOUSSANA SAND
MOSAICO 30x30 (tozz. 3x3) 11,8"x11,8"

34



G2045A FOUSSANA SAND LAPP. RETT. 30x60 - 11,8"x23,6"

64



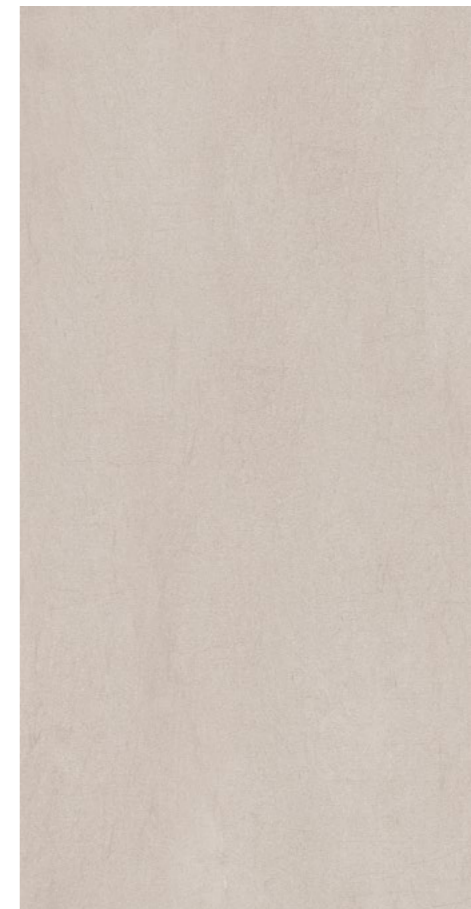
G2043A FOUSSANA SAND LAPP. RETT. 60x60 - 23,6"x23,6"

65



G30155 FOUSSANA SAND BATTISCOPA 8x60 - 3,1"x23,6"

16



G2052A FOUSSANA SAND LAPP. RETT. 45x90 - 17,7"x35,4"

66

Foussana

Imballaggi - packing - emballages - verpackung - Упаковки

| Formato Size cm Format cm Формат см | Pezzi/scatola Pieces/box Pièces/boîte Stück/Karton Изделий/коробку | Mq/scatola Sq.Mt./box Mq/boîte Qm/Karton M2/коробку | Kg/scatola Weight/box Poids/boîte Gewichte/Karton Kr/коробку | Scatole/pallet Box/pallet Boîte/pallet Karton/pallet Коробок/паллеты | Mq/pallet Sq.Mt./pallet Mq/pallet Qm/pallet M2/паллеты | Kg/pallet Weight/pallet Poids/pallet Gewichte/pallet Kr/паллеты | Spessore Thickness Épaisseur Stärke Толщина |
|--|--|---|--|--|--|---|---|
| 45x90 Fondo | 3 | 1,22 | 28,5 | 32 | 39,04 | 940 | 10 |
| 60x60 Fondo | 3 | 1,08 | 25,3 | 40 | 43,20 | 1040 | 10 |
| 30x60 Fondo | 6 | 1,08 | 25,3 | 40 | 43,20 | 1040 | 10 |
| 15x60 Fondo | 12 | 1,08 | 25,3 | 40 | 43,20 | 1040 | 10 |
| 45x90 Inciso | 3 | 1,22 | 28,5 | 32 | 39,04 | 940 | 10 |
| 8x60 Battiscopa | 20 | - | 20 | 30 | - | - | |
| 30x30 Mosaico (tozz. 6x6) | 6 | - | 9,86 | 30 | - | - | |
| 30x30 Mosaico (tozz. 3x3) | 6 | - | 9,86 | 30 | - | - | |



MADE IN
ITALY



01036 NEPI (VT) Loc. Settevene Via dell'Industria n, 7 Tel. 0761 5291 - 4 linee - Fax. 0761 527156
www.vallelungacer.it - www.vallelungaceramica.ru